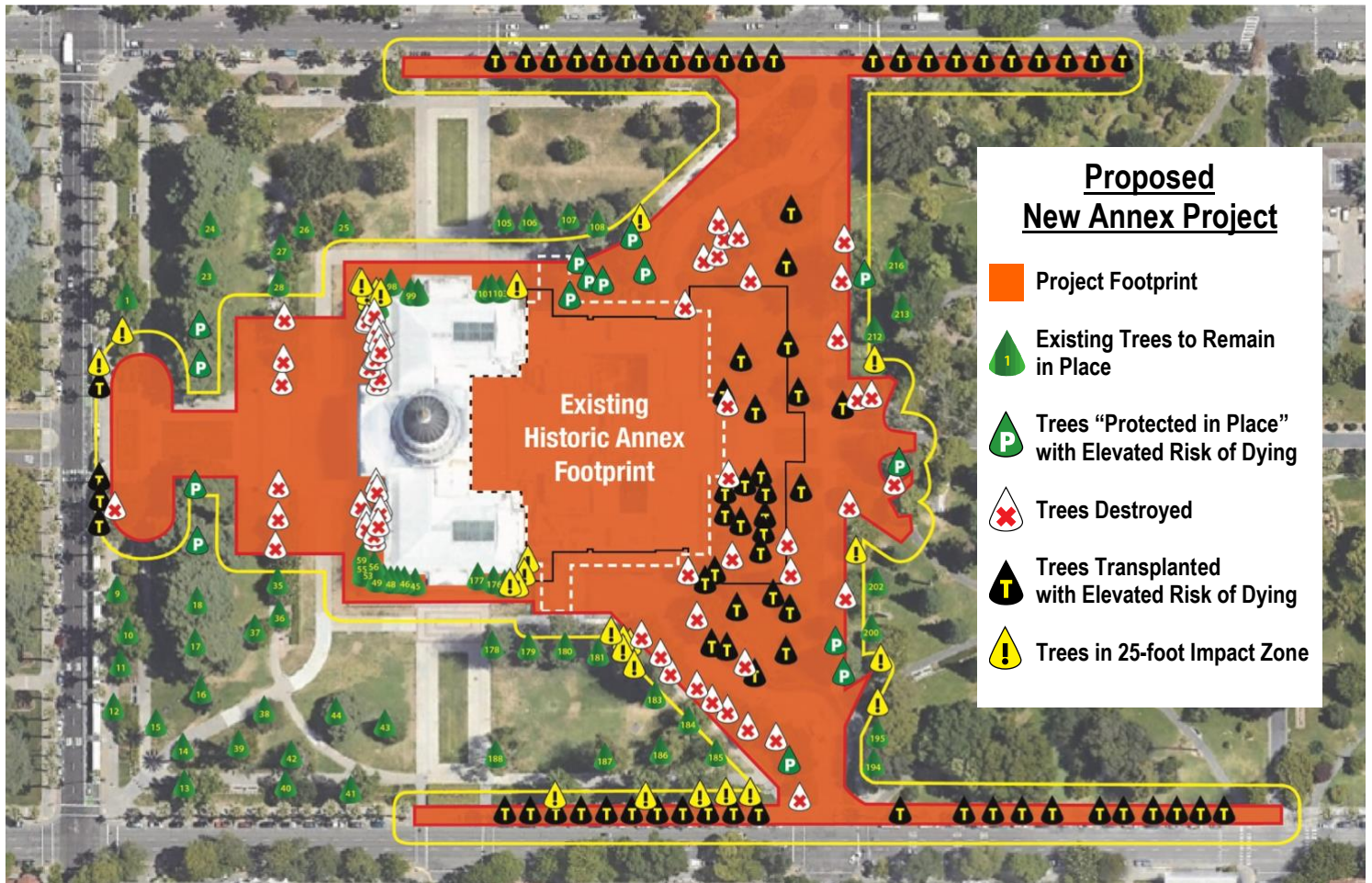




SAVE OUR CAPITOL!

Stop the Demolition!

The “Bigfoot Footprint” Annex Project
will destroy **69** trees and put **119** more at risk!



Map sources: DGS Draft Internal Map shown via Zoom May 26, 2021; JRC Presentations September 9, 2020 and March 22, 2021; Arborscience Report July 21, 2021: [Tree Inventory and Impact Assessment](#)

To save all trees, Save the historic Capitol Annex!

- 188** Trees negatively impacted from the proposed new Annex Project
- 15** Significant trees “Protected in Place,” yet close to construction, is no guarantee that root systems will be protected from irreparable damage
- 69** Trees to be destroyed and lost forever
- 74** Trees to be transplanted and may not survive, including **49** roadside palms if left without sufficient root systems to support them
- 30** Trees in the 25-foot Impact Zone likely to sustain root damage

Help stop the bulldozers and chainsaws from destroying our irreplaceable trees!